



**PROPOSED SHIRED CREEK BRIDGE AND
CALIFORNIA SWAMP CULVERT REPLACEMENT
ON COUNTY ROAD 357 IN DIXIE COUNTY**

**Florida Department
of Transportation**

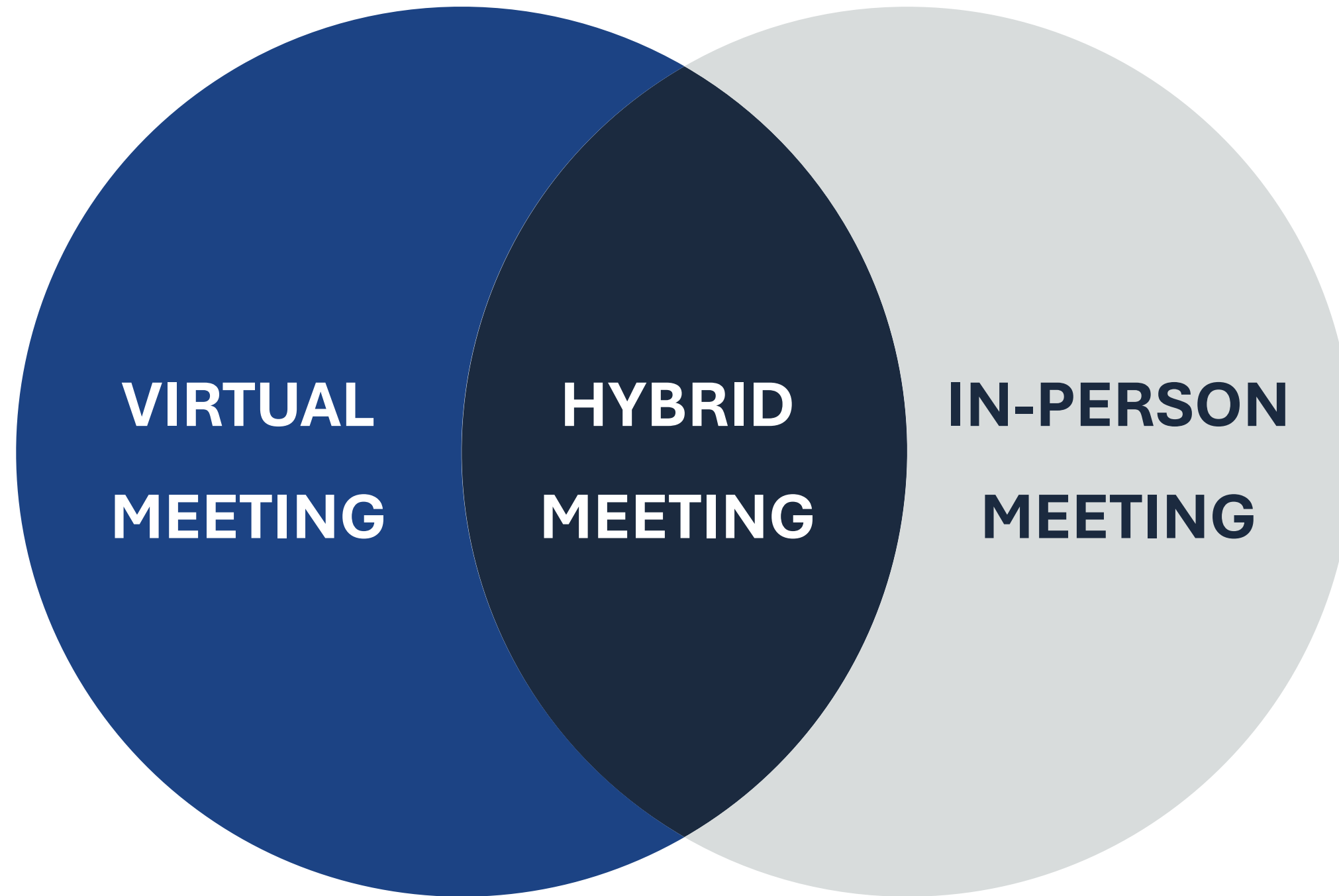




WELCOME

During this meeting, we will discuss the proposed replacements of Shired Creek Bridge and California Swamp culvert on County Road 357 in Dixie County.

HYBRID PUBLIC MEETING



TECHNICAL INFORMATION



All attendees are placed in listen only mode throughout the meeting.



Type your comments or questions in the control panel questions pane.



Responses to comments and questions will be provided.

Here are a few tips
for navigating

GoToWebinar.

WELCOME



Shired Creek Bridge and California
Swamp Culvert Replacement
Public Meeting

FIN#: 437402-1 and 437403-1

A small screenshot of the Zoom audio settings window. It shows the "Audio" tab selected, with "Computer audio" chosen. Below are microphone and speaker selection menus, a volume indicator, and a "Talking: Rusty Ennemoser" status. At the bottom is a "Questions" section with a text input field and a "Send" button, and a "Control Panel" section with the webinar ID "809-804-275" and a recording indicator.



A larger, detailed screenshot of the Zoom audio settings window, enclosed in a dashed border. It shows the "Audio" tab with "Computer audio" selected. A blue arrow points to the "Computer audio" radio button. Below are microphone and speaker selection menus, volume indicators, and a "Talking: Rusty Ennemoser" status. The "Questions" section is visible with a text input field and a "Send" button. The "Control Panel" section at the bottom shows the webinar ID "809-804-275" and a recording indicator.

In the event of **technical difficulties**, please stay online while we work to resolve the issue.

TITLE VI

Public participation is solicited without regard to race, color, national origin, age, sex, religion, disability or family status.

TITLE VI

NONDISCRIMINATION PROGRAM

District 2

Ms. Dorothy Neal
District 2 Title VI Coordinator

Florida Department of Transportation
District 2

1109 S. Marion Avenue, MS 2013
Lake City, Florida 32025-5874
(386) 961-7616

Dorothy.Neal@dot.state.fl.us

Equal Opportunity Office

Stefan Kulakowski, FCCM, CPM
State Title VI Coordinator

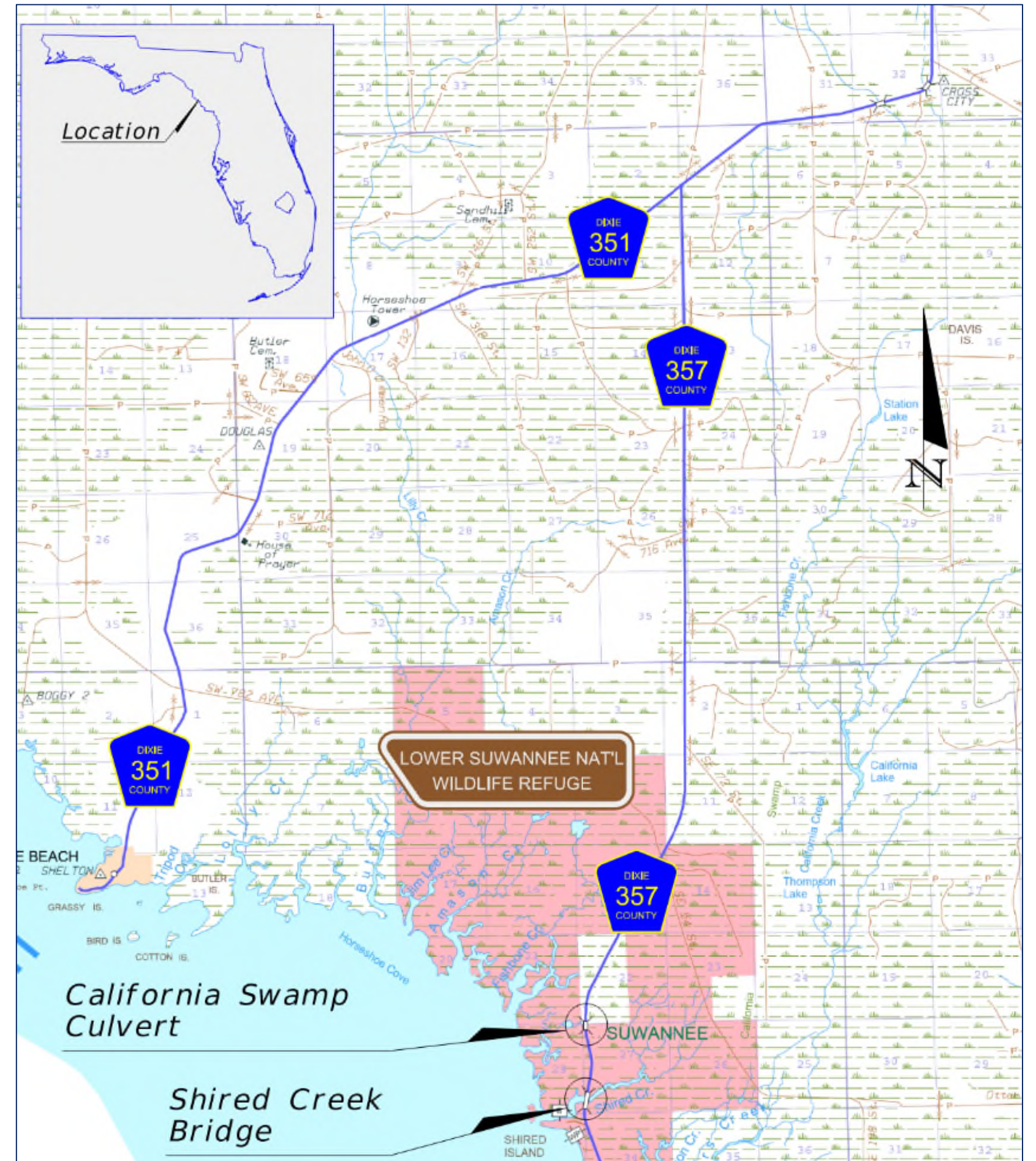
Florida Department of Transportation
Equal Opportunity Office

605 Suwannee Street, MS 65
Tallahassee, Florida 32399-0450
(850) 414-4742

Stefan.Kulakowski@dot.state.fl.us

COUNTY ROAD 357 OVER SHIRED CREEK BRIDGE AND CALIFORNIA SWAMP CULVERT REPLACEMENTS

FIN: 437402-1 AND 437403-1
DIXIE COUNTY



BRIEF OVERVIEW OF THE PROJECT



DESIGN AND CONSTRUCTION APPROACH

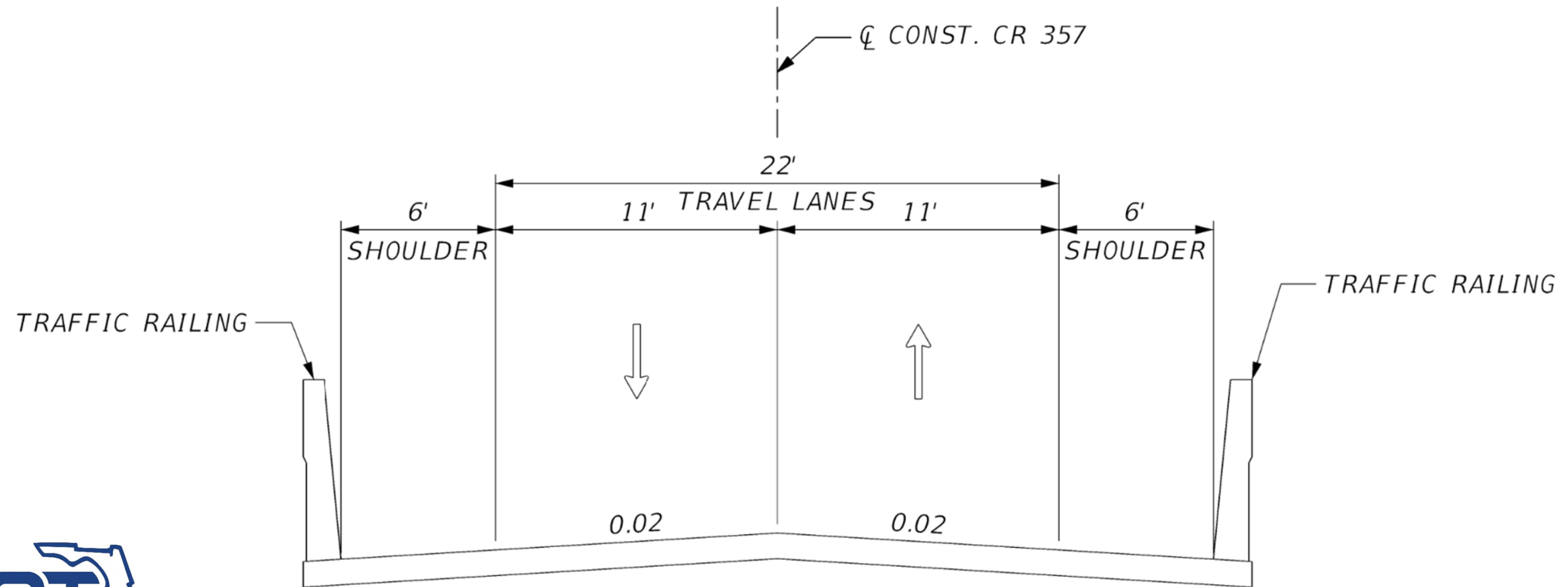
- Shired Island features a small county-owned RV park and a Lower Suwannee NWR boat ramp.
 - There are no residents or businesses south of the culvert.
- FDOT is working with Dixie County to close the road while the bridge and culvert are replaced.
 - Anticipated closure of 18 months
- Due to highly variable water levels, barges are not feasible. The Contractor is expected to use a temporary work trestle to build the bridge.
- The new culvert will match the existing culvert.
 - Full coffer dams upstream and downstream will be installed.
 - Temporary pipes will be used to maintain flow for 10-year event.
- Proposed bridge will be Florida Slab Beams on concrete piles.
 - GFRB and stainless-steel reinforcing are included due to extremely aggressive environment.
 - Precast elements, including pile caps, will be used as much as possible to limit concrete deliveries.

COUNTY ROAD 357 OVER SHIRED CREEK



COUNTY ROAD 357 OVER SHIRED CREEK

TYPICAL SECTION

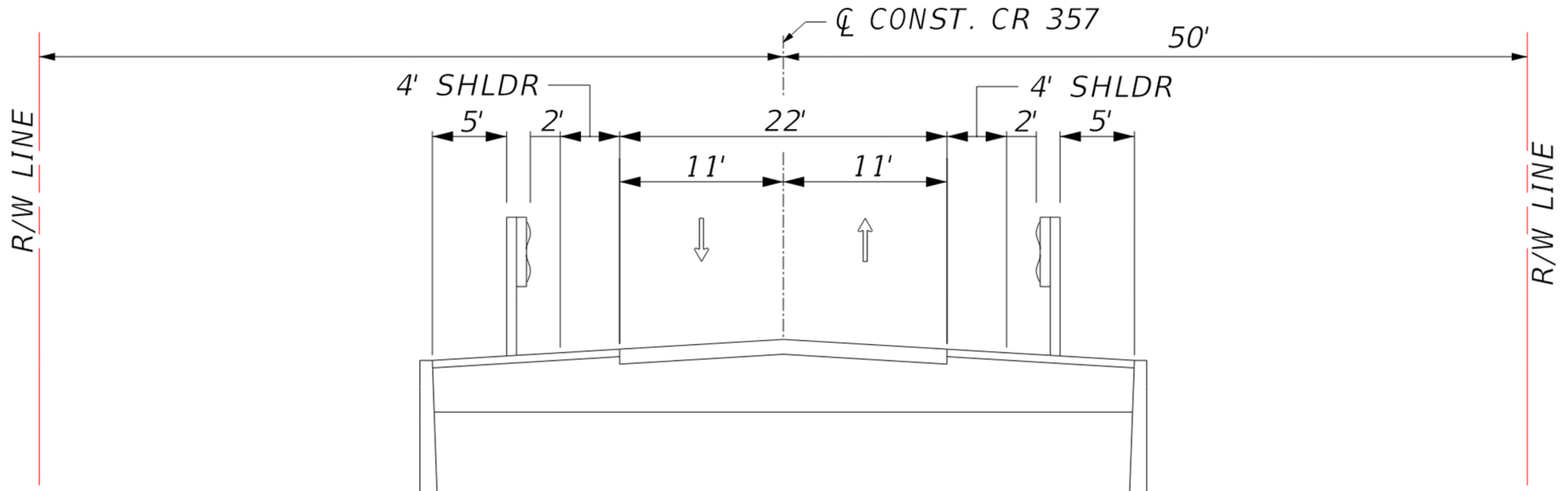


COUNTY ROAD 357 AT CALIFORNIA SWAMP



COUNTY ROAD 357 AT CALIFORNIA SWAMP

TYPICAL SECTION



COUNTY ROAD 357 OVER SHIRED CREEK



Old piers at high tide

Old piers at
low tide



COUNTY ROAD 357 OVER SHIRED CREEK



Fishing lines dangling from power line occurs at both the culvert and bridge

Worked oyster shell and projectile point recovered from shell midden



PROJECT HIGHLIGHTS

- Replace Shired Creek Bridge and California Swamp Culvert
 - Existing structures are structurally deficient, scour critical and obsolete
- Bridge and culvert are designed to be overtopped by storm surge
 - CR 357 overtopped by 6 feet during Hurricane Idalia.
- Project site bounded by Lower Suwannee National Wildlife Refuge (LSNWR)
- Native American shell midden delineated at southern end of project
- Remains of the piers for the original bridge are still present



COUNTY ROAD 357 OVER SHIRED CREEK



Pieces of the roadway deposited in the marsh by Hurricane Idalia

COUNTY ROAD 357 OVER SHIRED CREEK



LSNWR dock before
Hurricane Idalia



LSNWR dock after Hurricane Idalia
– moved nearly 1,100 feet away

COUNTY ROAD 357 OVER SHIRED CREEK



County pier before
Hurricane Idalia



County pier after Hurricane Idalia

SHIRED CREEK BRIDGE & CALIFORNIA SWAMP CULVERT REPLACEMENT COST AND SCHEDULE

PROJECTED START: Summer 2025

PROJECTED COMPLETION: Fall 2026

ESTIMATED COST: \$17 million



Shired Creek Bridge and California Swamp Culvert Replacement Project Information

COMMENTS MAY BE DIRECTED TO

Amy Williams, P.E.

1109 South Marion Avenue

Lake City, FL 32025

(386) 961-7359

Amy.Williams@dot.state.fl.us

Comments may also be submitted online at www.nflroads.com/vph by

August 14, 2024

FIN: 437402-1 and 437403-1

All comments
postmarked on or
before **August 14, 2024**
will be documented as
part of the project
record.

Shired Creek Bridge and California Swamp culvert replacement

About this Project

Photos

Documents

Public Events

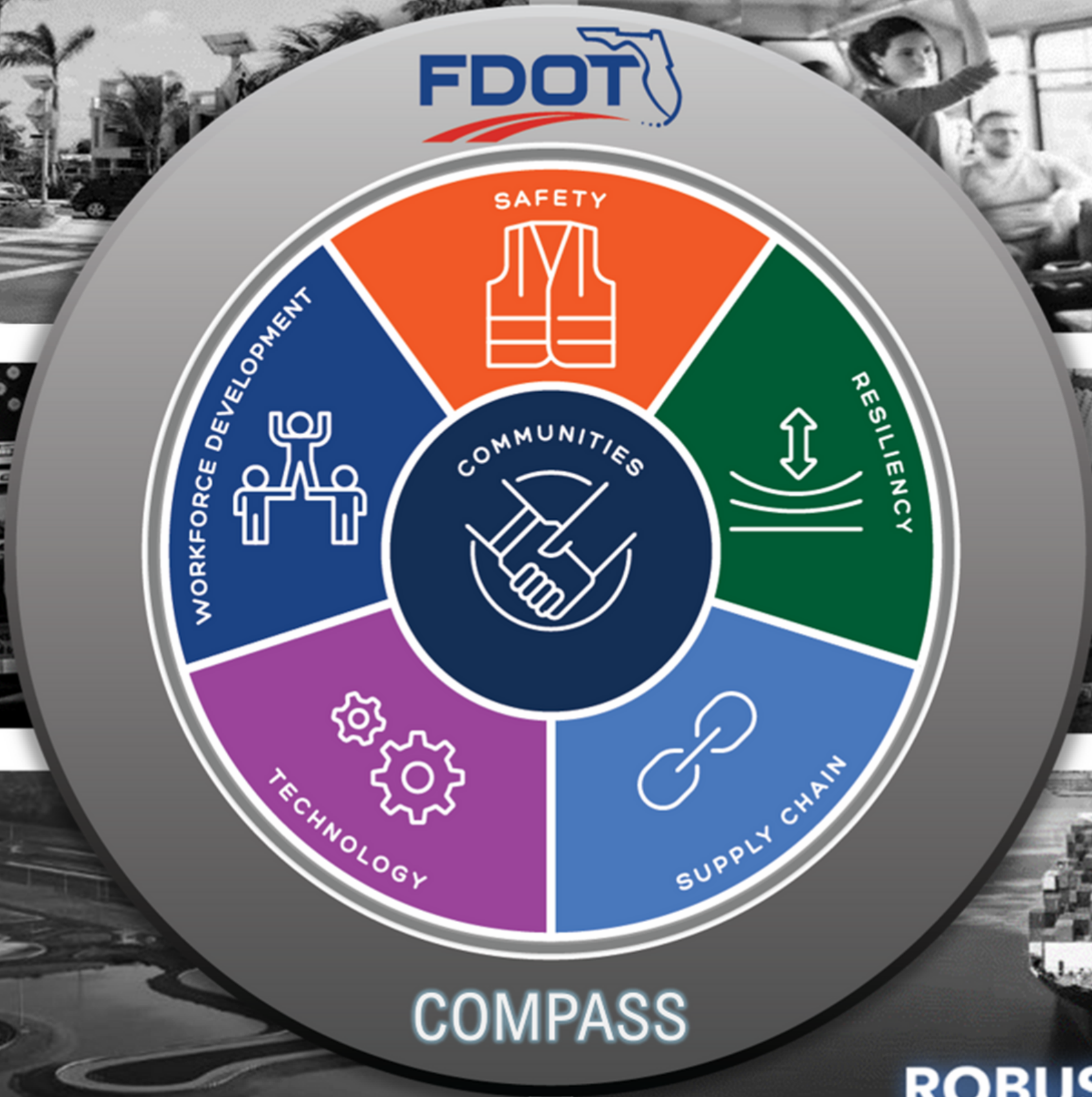
Overview

The Florida Department of Transportation (FDOT) District Two is proposing bridge and culvert replacements on the Shired Creek Bridge and California Swamp culvert on County Road 357 in Dixie County.

Project Details

Project Start:	Summer 2025
Expected Completion:	Fall 2026
Cost:	\$11.3 million
Project #:	437402-1; 437403-1
Roads	
Counties	Dixie
Cities	Cross City

PROJECT WEBSITE: nflroads.com > Dixie County > Future Projects





TARGET ZERO

FATALITIES & SERIOUS INJURIES



THANK
YOU



We are now in the
comment portion of
the public meeting